

## 42" ROCKWELL SOCIAL GRIDDLE

CRG-42BN01-A  
CRG-42BL01-A

### FEATURES

- World's first social grill with fully disappearing lid.
- Enjoy a 360-degree grilling experience, allowing you to interact with friends and family from every angle.
- Built-in for seamless integration into your luxury outdoor kitchen.
- Two 16,000 BTU 304 Stainless Steel Patented Crossflame® Burners.
- Easy to clean pull-out tray for grease management.
- 454 sq. inch cooking surface.
- 304 Series Stainless Steel interior and exterior.
- Pair with any True Residential undercounter model for the ultimate outdoor kitchen package.
- Bulk LP kit available.

### CUSTOMIZE YOUR CALIBER

Customize your Caliber with a variety of finish and hardware options at [true-caliber.com](http://true-caliber.com).

#### CUSTOMIZATION

### SPECIFICATIONS

\*HEIGHT DOES INCLUDE DRAIN VALVE

Cutout Dimensions (w x d x h)	40 <sup>3</sup> / <sub>8</sub> " x 23 <sup>7</sup> / <sub>8</sub> " x 16 <sup>3</sup> / <sub>4</sub> " (1/8" tolerance)
Cooking Surface Dimensions (w x d)	30" x 18.5"
Crated Weight (lbs.)	212
Burners	2
Cooking Grate Type	Stainless Steel Griddle
Ignition Type	Integrated Piezo Electric (no power required)
Fuel	Natural Gas or Liquid Propane
Gas Requirements	4" W.C. for Natural Gas 11" W.C. for Liquid Propane

### ACCESSORIES (OPTIONAL)

**The Caliber Grill Cover** - For the Rockwell Social Grill, this cover offers superior sun and weather protection, as well as built-in weighted sand bags to hold it securely in place.

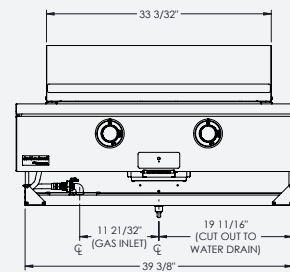
### WARRANTY

- 1 year full (parts & labor)
- 3 year grill system (parts)

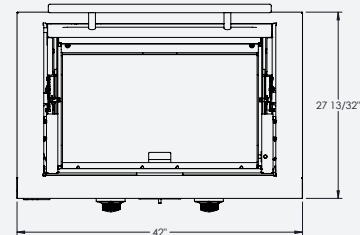


### PLAN VIEW

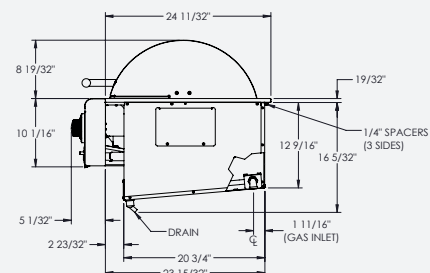
Note: Please refer to installation manual for detailed drawings.



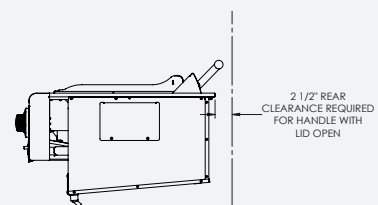
### FRONT VIEW



### TOP VIEW



### SIDE VIEW 1



### SIDE VIEW 2

\*Dimensions may vary +/- 1/8"